

UNBROKEN COMMUNICATION

The MOST device continuously uploads data to the internet via a GSM network connection, with automatic backup to the cloud – giving you the ability to make informed decisions based on real-time updates, and unprecedented power to build your business.



24/7 data control



Transparency for all stakeholders



Increased quality & safety



Enables proactive action



Eliminates human error



Increases profit potential

Find us at mobsentech.com

Want a special demonstration of our service? We will be happy to show how you can improve and secure your supply chain with MOST.



contact@mobsentech.com

Blekholtsterrassen 36, SE 111 64 Stockholm

mobsentech.com

MOST

Take full control of your supply chain

LOCATION / TEMPERATURE / LIGHT / HUMIDITY / SHOCK



REAL-TIME MONITORING POWER

mobsentech.com

BECOME A MARKET LEADER IN TRANSPORTATION

From departure to arrival, MOST provides you with real-time updates on all the external influences affecting your cargo. With perfectly accurate data, easily accessed and evaluated with our user-friendly and web-based interface, you will be able to reduce the risk of damage and optimise all future transport. All for the benefit of your efficiency, your profitability and the global environment.

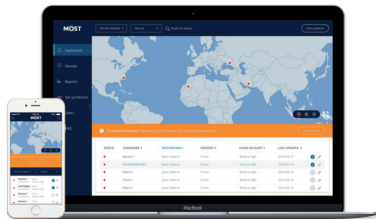
MOST DEVICE: MARKET-LEADING TECHNOLOGY

- One-touch activation
- 100-day battery life
- Reusable & rechargeable
- 4 digital sensors: temperature, light, humidity, shock
- Location updates via GSM network
- Pre-calibrated for superior, laboratory-tested accuracy
- Strength of MOST antenna allows monitoring of any environment
- Continuously uploads all data via GSM network



Using a GSM network connection, the device continuously uploads sensor data and location to the internet, making all your information constantly accessible to you via the MOST control panel. Equipped with four digital sensors to detect temperature, light, humidity and shock, the device keeps you fully informed around the clock.

MOST CONTROL PANEL: 24/7 DATA ACCESS & REPORTING



With our user-friendly mobile interface, you can access all your data effortlessly at all times, wherever you are.

No installation is required – simply log in. Generate tailored reports at the push of a button and share with any recipient of your choice.

- User-friendly mobile interface
- No hardware or software installation
- Completely web-based: never lose data
- Share device data
- Geofencing
- Tailored reports at the push of a button
- Alarms and notifications via email and SMS

DEVICE SPECIFICATIONS

GSM network	Quad band GSM 850/900/1800/1900MHz GPRS data connectivity Location update every hour*	Digital light sensor	Triggered by light
SIM	Global data roaming	Digital temperature sensor	Default 60 mins measurement and data-sending interval. Upload can be adjusted. Temperature measurement range: -20°C to 55°C Temperature accuracy range: ±0.3°C over full temperature measurement range Resolution: 0.015 CERTIFICATION: NIST TRACEABLE
Battery type & life	Lithium-ion 100 days' use** 3 months' storage	External digital temperature sensor interface (probe ready)	Default 60 mins measurement and data-sending interval. Upload can be adjusted. Digital interface using I2C and interrupt for waking up system USB-C connector
Charging interface	USB-C	Digital humidity sensor	Default 60 mins measurement and data-sending interval. Upload can be adjusted. Humidity measurement range: 0% to 100% RH Humidity sensor accuracy range: ±2% RH from 0 to 90% ±3% RH from 90 to 100% Relative humidity resolution: 0.01% RH***
Attachment	Attaches with double-sided tape on the back side of the device Device should be attached close to doors	Digital shock sensor	Default 60 mins measurement and data-sending interval. Upload can be adjusted. 3-axis G-sensor
Alarm function	Programmable high and low limits; alarm is triggered when measurement exceeds set limits	Programmable alert levels	From control panel, including: light, temperature, humidity and shock sensors.
Start-up options	Manual push button		
Typical dimensions	Diameter: 125 mm Thickness: 30 mm		
Weight	220 g		
Certifications	Quality assurance CE/FCC Temperature and humidity sensor NIST traceable		
Computer/mobile interface	Easy access to your data		
Water resistance	IP54 = splash proof		
Sales pack	Packaged in 10-device sales packs		
API integrations	REST and PUSH service (JSON SOAP or XML)		

* **Location update** Within GSM coverage

** **Battery life** Based on hourly sensor readings and GSM uploads, 60 days' use (one-year storage)

*** **Humidity** RH accuracy stated within temperature exposure range of 5°C to 60°C, non-condensing